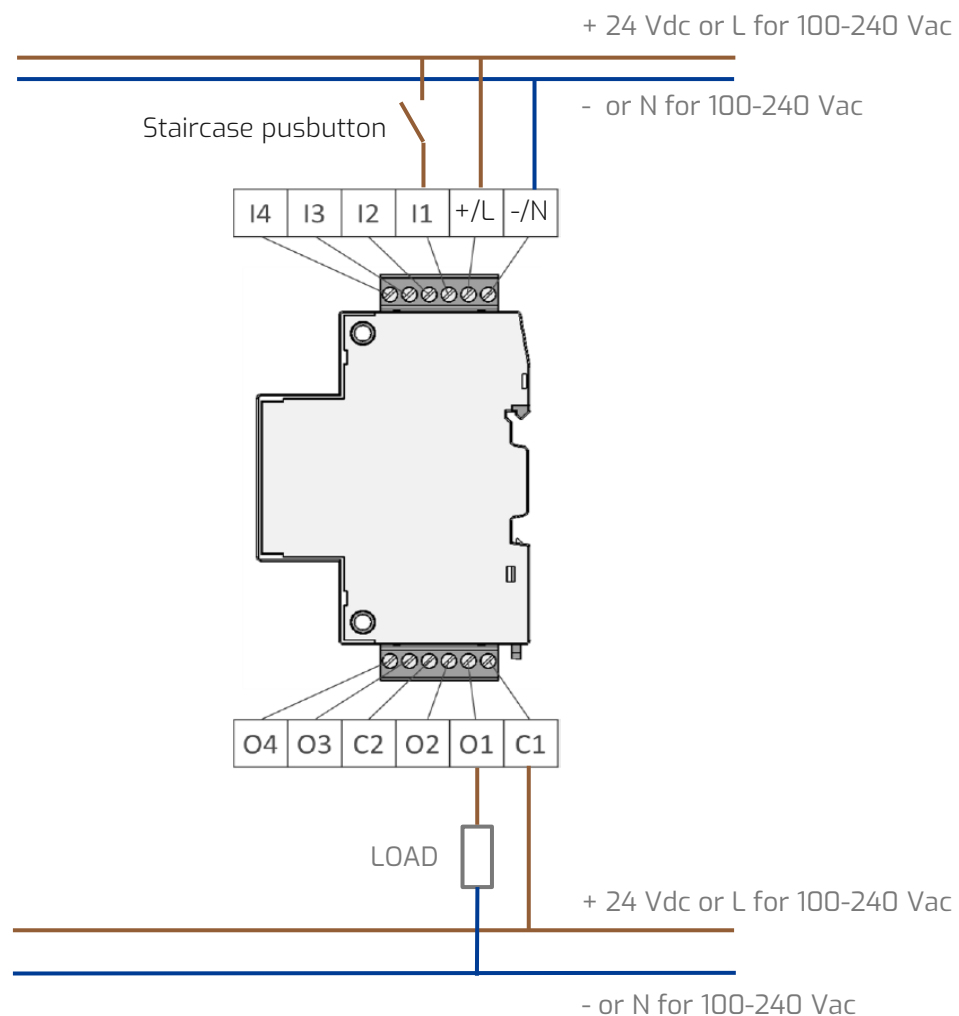


Staircase Timer

MillenniumSlim can be used as a staircase timer. When pressing a button, lights are switched on and a timer is engaged, it will allow to reach the destination before extinguishing the lamps.

Wiring Diagram



Components List

- > 1x **MilleniumSlim** Logic Controller, part numbers available:



88983903



88983901



88983902

- > 1x **24 VDC Power supply** if a 24 VDC version of Millenium Slim is used. Crouzet recommended part numbers:



89451001



89451003



89451006



89451010

- > 1x **Push button**, normally open contact

Software & Program

If you need to adapt and modify the program of the application, you can open the given PCS program file with the **Crouzet Soft** Software Workshop



Crouzet Soft

- › Easiest and most intuitive visual programming software
- › Pre-programmed application blocks like pump management, flow control, liquid level and many more

[Download it here for FREE!](#)

Once we connect the supply of our Millenium Slim, you can transfer the base program via your laptop or using the Crouzet **Virtual Display** app

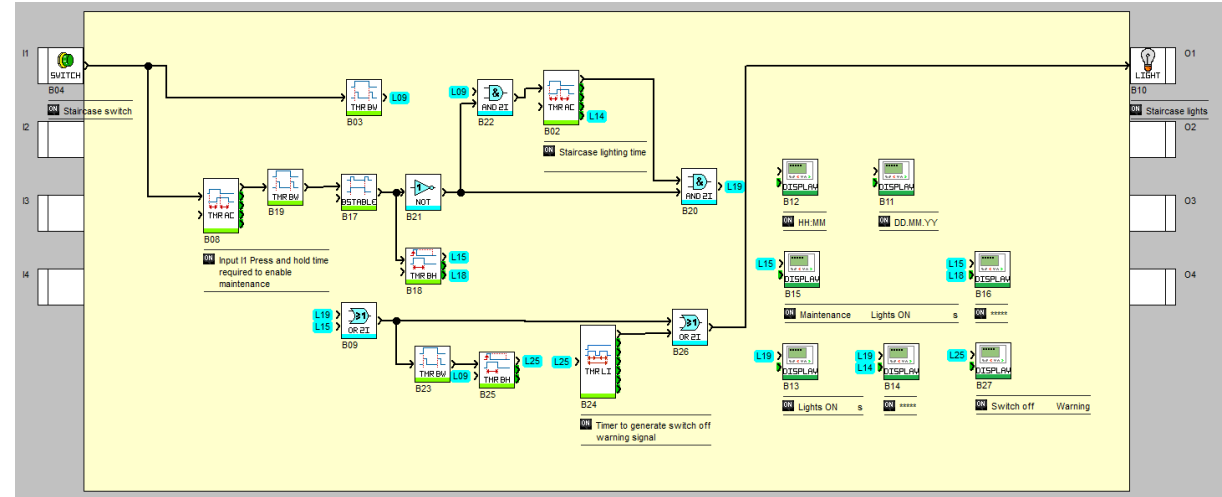


Virtual Display

Visualize and manage your controller at a distance:

- › View and change parameters
- › Read & write programs
- › Download Datalog
- › Firmware update

[Download it here for FREE!](#)



To operate the timer press one of the staircase pushbuttons connected on input I1. Pressing one pushbuttons during the timing period will reset the time and extend the duration. At the end of the set time the output contact O1 opens. Staircase lighting time is set inside timer B02 (default 20s). The Staircase timer has also the following features:

- Staircase Maintenance: allows to switch on the lights for a longer time for maintenance or cleaning activities. Feature is enabled by pressing and holding one of the staircase pushbuttons connected to input I1 for more than 5 seconds (this time can be adjusted in timer B08). Maintenance duration can be set in timer B18 (default 1 hour=3600s). To stop the maintenance operation at any time press again one of the staircase pushbuttons from more than 5s.
- Switch off warning: after the timing period the relay contact blinks off two times at intervals of 10s before switching off. During this time it is possible to extend the time by pressing again one of the staircase pushbuttons. Switch off warning duration is set in timer B24.



Warning and Disclaimer of Liability

Example Program without Liability

General Warning

Unsafe operating conditions can cause controllers to fail, resulting in unchecked operation of controlled devices. Such hazardous events can cause death and/or serious injury and/or material damage. You must therefore provide an emergency stop function and electric or other redundant safety devices that are independent of your automation system.

Disclaimer of Liability

The services provided by Crouzet in the assistance of PLC programming, construction of pneumatic logic diagrams or circuits, or other programmatic activities are for demonstration purposes only. Crouzet makes no representation as to the accuracy of the programming and no warranty, express or implied, is to be created by the providing of such service.

Users are solely responsible for the correct operation of their Millenium Slim systems. This program does not relieve you of the obligation to observe safe practices during implementation, installation, operation, and maintenance.

By using this example program created by Crouzet, you acknowledge that Crouzet cannot under any circumstances be held liable for any possible personal injury or material damage resulting from the use of this program.