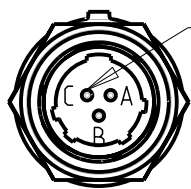


A ELECTRICAL CHARACTERISTICS:

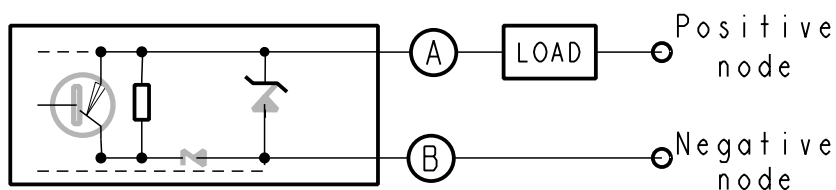
POWER SUPPLY:	15 VDC ±10%
MAXIMUM VOLTAGE:	32.5 VDC WITH LOAD ADAPTATION
ELECTRICAL CONTINUITY:	2.5mΩ max BETWEEN CASE AND CONNECTOR
LEAKAGE CURRENT:	50 μA MAX at 16.5 Vdc
SWITCHING REPOSE TIME (Ton & Toff):	5ms max
SWITCHING FREQUENCY:	100Hz max
INSULATION RESISTANCE:	100MΩ / 500 Vdc
DIELECTRIC STRENGTH:	1000 VAC / 50Hz / 1mA
PROTECTION AGAINST:	POLARITY INVERSION AND LOAD SHORT CIRCUIT

CONNECTION OUTPUT: D38999/25YA98PN



PIN C NOT CONNECTED INTERNALLY

WIRING DIAGRAM:

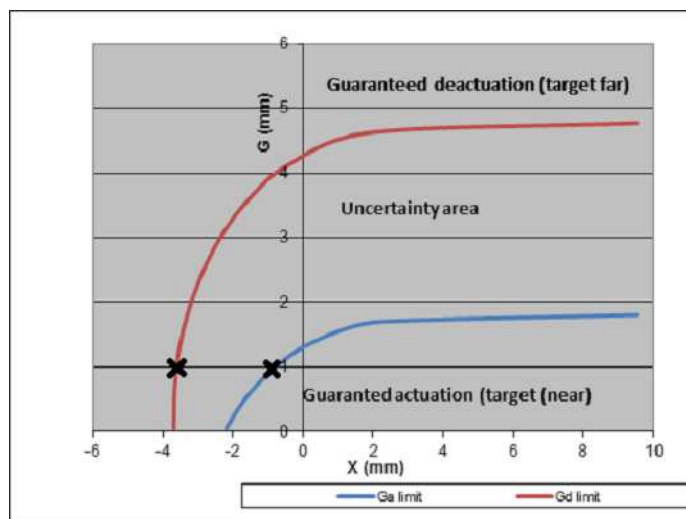


OUTPUT FEATURES :

LOAD: 400Ω ±5%

I LOAD	<1mA	1<1<3mA	3<1<6mA	6<1<12mA	>12mA
OUTPUT STATE	FAILURE IPD OR OPEN CIRCUIT	NO CONDUCTIVE OUTPUT	FAILURE IPD	CONDUCTIVE OUTPUT	FAILURE SHORT CIRCUIT BETWEEN A AND B OR OVERLOAD
	TARGET FAR		TARGET NEAR		

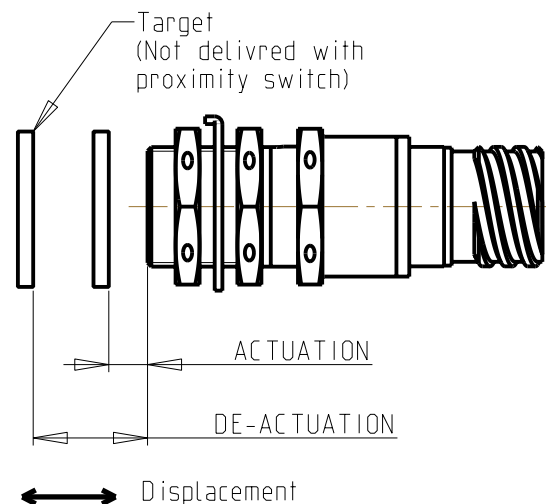
OUTPUT CONDUCTIVE WHEN TARGET IS IN ACTUATION AREA. (Normally Open)



SWITCHING DISTANCE DEFINED FOR :

TARGET IN FERRO MAGNETIC STEEL 17-4PH WITH 16mm DIAMETER AND 1mm THICKNESS MINIMUM

**ATP (as follow)
Frontal actuation / de-actuation**



Head-on Actuation min ≥ 1.8mm (tested in ATP)
Head-on De-actuation max ≤ 4.7mm (tested in ATP)

B ENVIRONMENT CHARACTERISTICS:

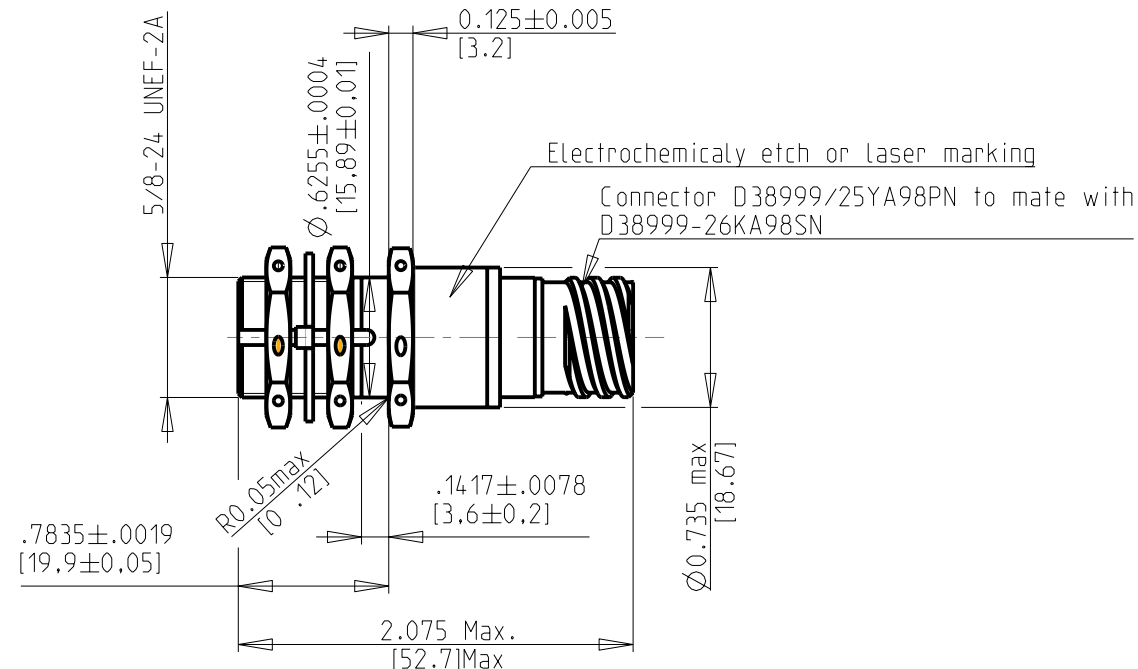
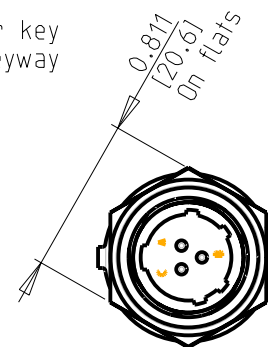
OPERATING TEMPERATURE:	RTCA DO-160G SECTION 4 CATEGORY D2 (-55 °C to +85 °C)
SHORT TIME OPERATING TEMPERATURE:	RTCA DO-160G SECTION 4 CATEGORY D2
ALTITUDE:	RTCA DO-160G SECTION 4 CATEGORY D2
TEMPERATURE VARIATION:	RTCA DO-160E SECTION 5 CATEGORY A
HUMIDITY:	RTCA DO-160G SECTION 6 CATEGORY C
SHOCKS & CRASH SAFETY:	RTCA DO-160G SECTION 7 CATEGORY B
VIBRATION:	RTCA DO-160G SECTION 8 CATEGORY S - CURVE W
EXPLOSIVE ATMOSPHERE:	RTCA DO-160G SECTION 9 CAT H
WATERPROOFNESS:	MIL-PRF-8805E WATERTIGHT SYMBOL 3
FLUID SUSCEPTIBILITY:	RTCA DO-160G SECTION 11 CATEGORY F
SAND & DUST:	RTCA DO-160G SECTION 12 CATEGORY D
FUNGUS:	RTCA DO-160G SECTION 13 CATEGORY F
SALT SPRAY:	RTCA DO-160G SECTION 14 CATEGORY S
MAGNETIC EFFECT:	RTCA DO-160D SECTION 15 CATEGORY A
POWER INPUT:	RTCA DO-160D SECTION 16 CATEGORY Z
VOLTAGE SPIKE:	RTCA DO-160G SECTION 17 CATEGORY A
AUDIO FREQUENCY CONDU. SUSCEPT.:	RTCA DO-160D SECTION 18 CATEGORY Z
INDUCED NOISE SUSCEPTIBILITY:	RTCA DO-160G SECTION 19 CATEGORY CW
RADIO FREQUENCY SUSCEPTIBILITY:	RTCA DO-160G SECTION 20 CATEGORY TT
EMISSION OF RADIO FREQUENCY ENERGY:	RTCA DO-160G SECTION 21 CATEGORY H / CATEGORY M
LIGHTNING EFFECTS:	RTCA DO-160G SECTION 22 CATEGORY A3JL3
ICING:	RTCA DO-160G SECTION 24 CATEGORY A
ELECTROSTATIC DISCHARGE:	RTCA DO-160D SECTION 25 CATEGORY A

For fluids /
Fuels:-Aviation Jet fuel (F34)
Hydraulic fluids:
-Phosphate ester type 4 (Skydrol 500b)
-Mineral based (Mil-H-5606)
De Icing fluid:-ethylene Glycol
Lubricating oil:-turbo oil 2380
Solvents and cleaning fluid:-Isopropyl alcohol

MECHANICAL CHARACTERISTICS:

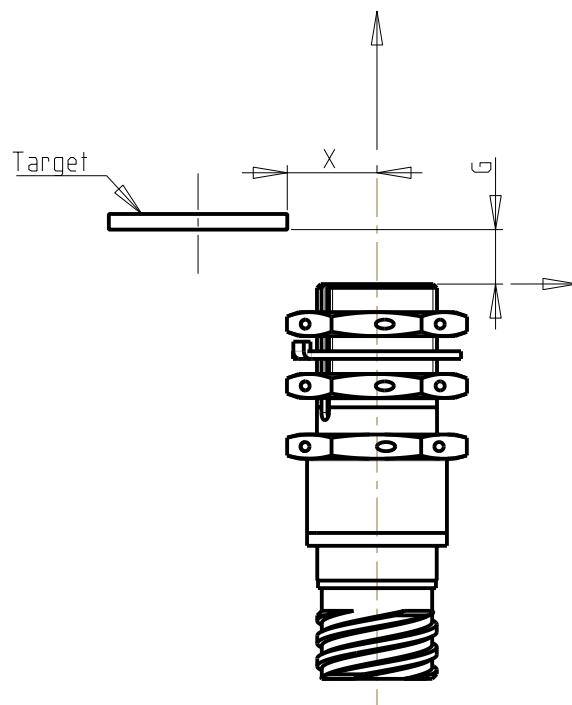
- MATERIAL : STAINLESS STEEL AISI 304L INCLUDING FRONT FACE
- TIGHTENING TORQUE: 10Nm max
- WEIGHT: 70g max
- 2 Stainless steel nut MS 21340-05
- 1 Stainless steel lock washer MS 25081-C6

Connector master key rotated 0° ±10° from housing keyway



C WIRING:

PROXIMITY SWITCH MUST BE USED WITH AWG24 TWISTED & SHIELDED WIRES (E M I)
WIRING EXTERNAL TO FUSELAGE MUST HAVE 360° SHIELD BOND



84792000

Product:

A	CREATION	Modified by	M_VERDIER	06/06/2017
	IA2016057	Verified by	PE_BONNET	06/06/2017
		Authorized by	F_SALA	06/06/2017
Toler. gene. Lin ± / mm		This document is the property of Crouzet-Automatismes. It's contents cannot be reproduced or divulged without the company's written approval. The product data and specifications found on this document do not constitute any contractual obligation. Crouzet-Automatismes and its subsidiaries reserve the right to modify the specifications. All rights of reproduction, modification, reprinting, and translation reserved for all countries.		
Toler. gene. Ang ± / degrees				
CROUZET	General Raw surface Ra ✓	Scale 1/1		
2. rue du Dr ABEL BP 59. 26902. Valence CEDEX 9 France		Customer:	CATALOG PRODUCT	Customer Ref.: NA
		Designation/FR:	DETECTEUR DE PROXIMITE	
		Designation/GB:	PROXIMITY SWITCH	
Request:	Designed by M_VERDIER 06/06/2017	DATA SHEET		
--	Verified by PE_BONNET 06/06/2017			
NATO code: FA0X2	Authorized by F_SALA 06/06/2017	FT84792000GB		
		Department	CT	
		Index	Format	Folio
		A	A3	1/1